

# Born for the night

---

Adapts to DJI M300 & M350 RTK

## S2 Plus

---

AI Night Vision  
Drone Camera

 DEEPTHINK

# S2 Plus

## AI Night Vision Drone Camera

S2 Plus, launched by Deepthink, a smart AI Night Vision UAV Camera, adapts DJI M300 & M350 RTK.

Based on the AI-powered ISP algorithm, S2 Plus can realize HD full-color night vision imaging in extremely low light environments as low as 0.005 lux, and achieve daytime-like visual effects at night. The product is equipped with 20X optical zoom lens and 80X integrated zoom, which can realize long-distance and wide-range real-time shooting.

Meanwhile, the built-in algorithm with the functions of noise reduction, anti-shake, and de-fogging, is convenient to operate and applicable to many industry scenes such as public security, water conservancy, forestry, petroleum, electric power, scientific research and so on.



---

AI-powered ISP algorithm,  
full-color HD imaging in  
low light down to 0.005 lux



---

4MP zoom camera,  
with 80X  
integrated zoom



---

Intelligent HDR/3A,  
high imaging quality, and  
2K resolution HD picture



---

Real-time image transmission,  
real-time view of the scene  
screen, abnormalities at a glance



---

IP44,  
fearless of rain  
and snow



---

Operating range -20°C to  
60°C (-4°F~140°F), no worries  
in extreme scenarios



### **Low wind resistance design**

high-density aluminum alloy shell heat dissipation. Overcome the extreme operating environment of the drone

### **Night vision zoom camera**

20X optical zoom,  
80X integrated zoom,  
4MP

1/1.8" Super Starlight CMOS,  
0.005 Lux Full Color HD Imaging



## Richly-defined color above 0.005 lux

Generating images based on AI-powered ISP algorithm, this new technology enables users to see crisp, true-color images and take photos/videos in nearly complete darkness(0.005 lux). Meanwhile, S2 Plus has excellent field of view and ultra-long night visibility distance.



**0.005 Lux**

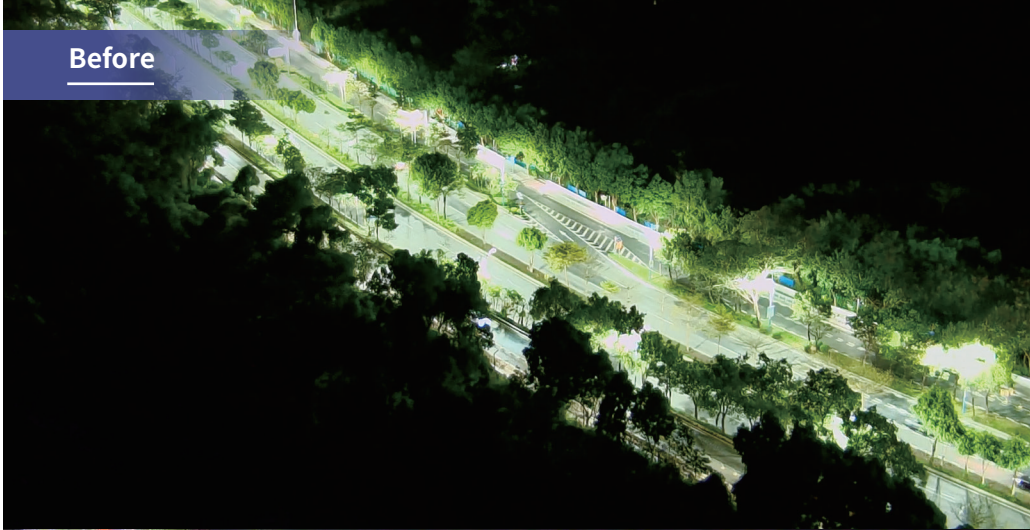
1/1.8" Super Starlight CMOS



## HDR Imaging in all conditions

In complex lighting scenes such as nighttime and city traffic, imaging is easily affected by light intensity, resulting in the loss of imaging details. The full-color zoom night vision camera has a built-in HDR function that boosts the high dynamic range to 120dB, restores true colors, and ensures that image details are not lost.

Before



After



## Lift one's head above the fog

In rain, fog, snow, and other environments, light is affected by the occurrence of different degrees of attenuation, which in turn leads to blurred imaging. De-fog kinetic energy automatically analyzes each pixel in the picture, calculates the degree of attenuation of light through the obstacles, through the algorithm to compensate for the imaging, and ultimately realizes the de-fogging, presenting high-definition imaging.

Before



After





Before



## IR-Cut founction

Due to the influence of different wavelengths of light, the final image of the color is prone to deviation from the color seen by the naked eye, especially in the night environment. The light is extremely weak and difficult to image, and color deviation is more serious. Turning on the IR-CUT function can capture invisible light sources, thus ensuring that the target is prioritized in extremely dark scenes.

After





# S2 Plus Night Vision



# Competitor



AI Night Vision UAV Camera S Series

# AI Night Vision Drone Camera S2 Plus

Spec

Sensor	1/1.8" Starlight CMOS
Minimum Illumination	Full color: 0.005 Lux
Image Resolution	4MP, Full color 2688*1520P
Video Frame	5fps ~ 30fps
Video Compression	H.264
WB	Auto
Gain	Auto
No Fill-light	Support
OTA Upgrade	Support
Device Logs	Support
WDR	120 dB
SNR	>48 dB
Digital Noise	Support
AI HDR	Support
Exposure Mode	Auto

AI Night Vision UAV Camera S Series

# AI Night Vision Drone Camera S2 Plus

Zoom

Focal	f=6.3~125mm, 20X optical zoom、80X max zoom Equivalent 30.2-600mm
Aperture	F 1.6 - F 4
Field of View	D:59.6° WIDE; 3.5° TELE H:35.7° WIDE; 2.0° TELE V:66.6° WIDE; 4.0° TELE
Day-night Mode	Electric IR-CUT

PTZ

Angular Jitter	± 0.008°
Control Rotation Range	P: -120°~+30°, Y: ±320°
Interface	DGC 2.0
Power	13.6 V / 2 A



AI Night Vision UAV Camera S Series

# AI Night Vision Drone Camera S2 Plus

Interface

SD card

Micro SD (Max 128G)

General Spec

Circuit Power

6 W

Protection Level

IP 44

Working  
Humidity

-20°C~60°C(-4°F~140°F),  
Humidity<95% (Condensation-free)

Size

L 175 mm × W 126.5 mm × H 152 mm

Weight

790g ± 5

# LET'S LIGHT UP THE WORLD

The world's most advanced AI-ISP night vision hub.

Founded in 2017, Deepthink is the world's first start-up that uses AI ISP to deliver true-color night vision hardware. Product lines consist of AI night vision cameras, uav cameras and monoculars. Global markets include the US, Australia, Japan, Korea, as well as China.

As the world's leading night vision hub, Deepthink is the only company with the ability to achieve richly-defined color even in the darkest moment, which is around 0.0001lux. It's committed to unlock night adventure to users all over the world.



DEEPTHINK



DEEPTHINK



[www.deepthink.ai](http://www.deepthink.ai)